

60-901 LXI Simulation Tool

- Simulates All Pickering PXI & LXI Switching Products
- More Than 1000 Switching Product Configurations Available
- Supports Over 18 Simulated PXI Slots
- Allows Code Development Independently From The Application Hardware
- Ethernet 100base T Interface
- Powered From Standard 5V Inline Power Supply
- Highly Portable
- 3 Year Warranty



The 60-901 supports the simulation of all Pickering's PXI and LXI Switching products, and most of the Simulation and Instrumentation range in one highly portable package. Each product is supported as a virtual LXI device allowing code development with minimal hardware, it also has the ability to show real-time switching and debug information and comes complete with a driverless soft front panel that provides complete control of the module's functions. The 60-901 provides the user with a simple and highly portable platform for application development.

Supported Products

The 60-901 allows the user to simulate any of Pickering Interface's PXI switching modules fitted into a virtual Modular LXI Chassis, over 18 virtual PXI card slots can be supported. There is also partial support for Pickering's simulation and instrumentation modules including programmable resistors. All Pickering's LXI switching products are also supported.

Software

The tool provides a link to a downloadable generic IVI driver to control the PXI and LXI products in accordance with the LXI specification, but can also be controlled through a kernel

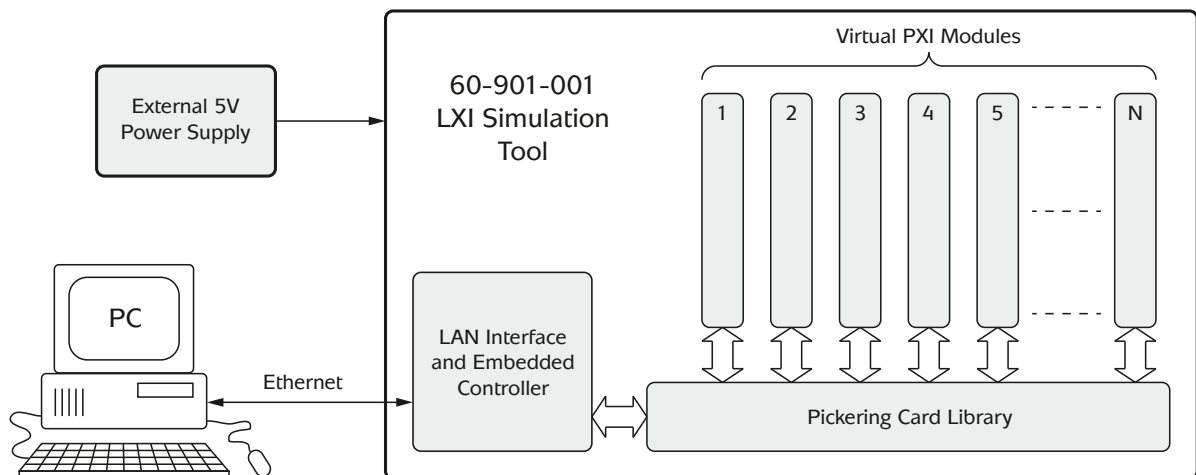
driver. A library of PXI and LXI products and firmware is installed on the Simulation Tool on a removable memory card, allowing easy future upgrades.

Code Development

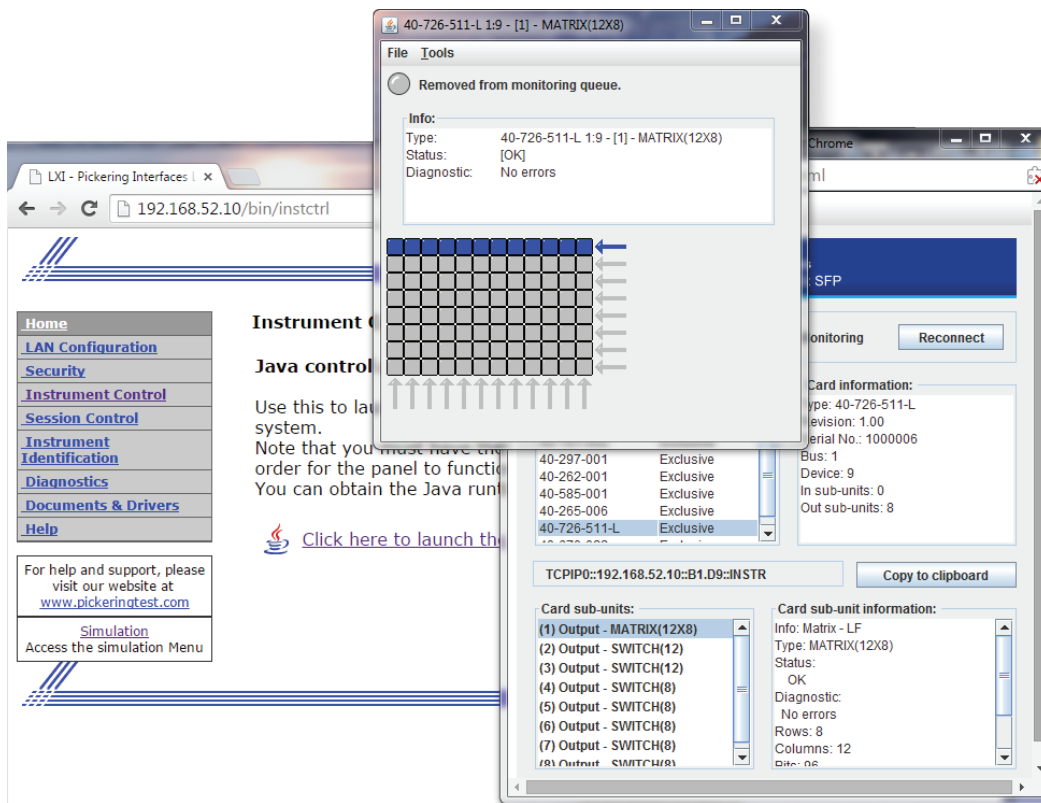
Pickering Interface's standard LXI driver and debug panel are provided to assist application development. An 8x8 LED matrix on the top of the tool along with a web panel displays the switch status of the simulated module for debug purposes. With the 60-901 you can code and test your LXI control application before purchasing or connecting to your Pickering LXI test system.

Ethernet Control

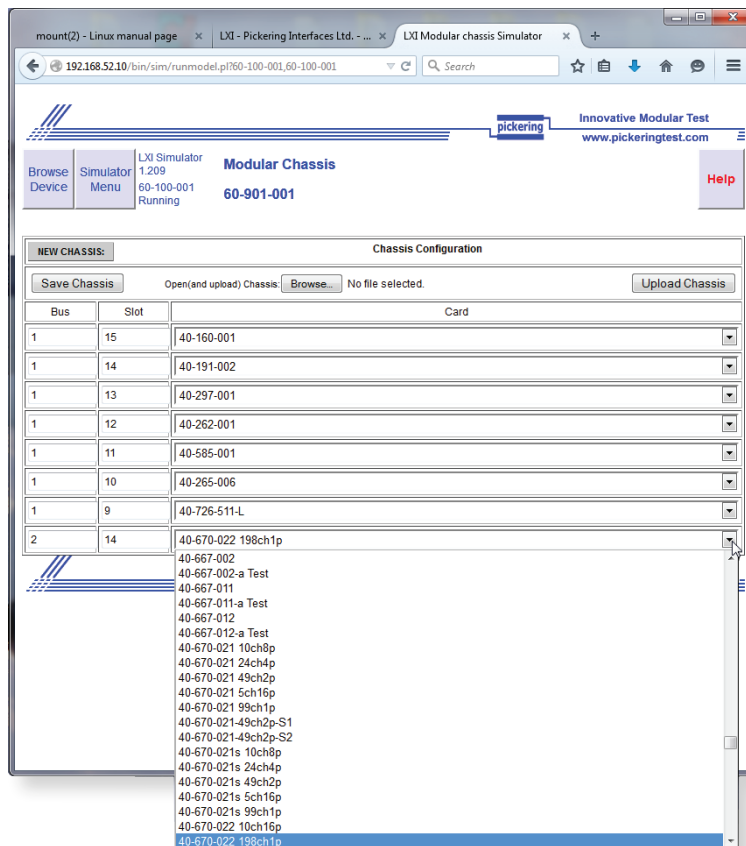
The Ethernet interface enables the tool to be controlled through standard LAN interfaces found on all system PC/host controllers. The 60-901 can be simply configured over its LAN interface using any industry standard web browser. The interface can be used to load a Java based soft front panel for any of the products simulated by the tool, permitting users to access products without the need for drivers on the PC/host.



Simulation of Pickering Interfaces PXI modules using the 60-901 LXI Simulation Tool provides an application development platform. A simple Ethernet lead is the only physical control connection required.



The 60-901 selected chassis provides soft front panels to enable manual operation through the web interface, in this example for a 40-726 matrix module.



Configuration page for a modular chassis which allows a choice of virtual PXI modules

Specification

Capacity: Over 18 simulated user slots available.

Product compatibility

The LXI Simulator is supplied with links to drivers for the majority of Pickering's PXI and LXI products.

Switching Support All of Pickering Interface's PXI and LXI switching products.

Instrumentation support: Partial support: PXI programmable resistor/potentiometer modules and RF attenuators.

Soft Front Panel: All supported products can be controlled through a standard W3C compliant web browser.

For a selection guide on the range of PXI modules capable of being simulated by the 60-901 tool, please see the PXI Module Selection Guide in the LXI Product Guide. This is available as a download from the On-Line Catalogs section of our website: www.pickeringtest.com

Programming

All LXI devices are supplied with built-in software drivers, web pages for configuration and soft front panels as required by the LXI specification.

A variety of drivers are provided (C, .NET, IVI, SOAP) which are compatible with all Microsoft supported versions of Windows and popular older versions. For a list of all supporting operating systems, please see: www.pickeringtest.com/os

The drivers may be used in many commonly used programming environments and applications including:

- **Pickering Interfaces Switch Path Manager**
- **MTQ Testsolutions** Tecap Test & Measurement Suite
- **National Instruments** (LabVIEW, LabWindows/CVI, Switch Executive, TestStand, VeriStand, MAX etc.)
- **Microsoft Visual Studio** (Visual Basic, Visual C++, Visual C#)
- **Keysight VEE** • **Mathworks Matlab** • **Marvin ATEasy**

As well as various open source environments such as:

- **Sharp Develop** • **Dev-C++**

Power Supply

Supplied with a 5V 1A DC in line power supply.

Monitoring

Top Panel Display: Dual function LED matrix shows IP address and switch status.

LAN Interface

Connector: RJ45 Connector.

Connection Speed: 100baseT interface.

Supporting Documentation

Manuals, drivers and product catalogs can be downloaded from the Pickering Interfaces website.

Width and Dimensions

Dimensions: Width: 94mm (3.70")
Height: 76mm (3.00")
Depth: 32mm (1.26")

Weight: 100g

Safety, CE & RoHS Compliance

All modules are fully CE compliant and meet applicable EU directives: Low-voltage safety EN61010-1:2001, EMC Immunity EN61000-6-1:2001, Emissions EN55011:1998.

The 60-901 LXI Simulator also complies with the European Restriction of Hazardous Substances directive (RoHS).

Product Order Codes

LXI Simulation Tool:	60-901-001
----------------------	-------------------

Latest Details

Please refer to our Web Site for Latest Product Details.

www.pickeringtest.com

Operating/Storage Conditions

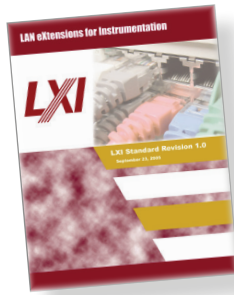
Operating Conditions (operating with specified airflow)

Operating Temperature: 0°C to +55°C
Humidity: 10% to 95% non-condensing

Storage and Transport Conditions

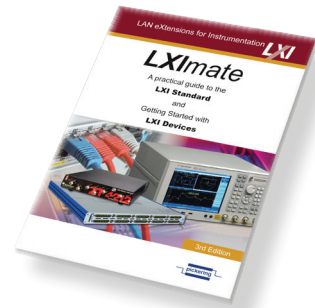
Storage Temperature: -20°C to +70°C
Humidity: 10% to 90% non-condensing

LXI is the standard for Ethernet control of instrumentation. It is the natural successor to GPIB (IEEE-488) incorporating LAN connectivity, full web browser support, IVI drivers and advanced triggering capability.



Pickering Interfaces is a Board level member of the LXI Consortium (www.lxistandard.org) and together with Agilent Technologies was the first company to release a fully compliant LXI device. Pickering is developing a large range of products conforming to the LXI standard and is constantly introducing new products in response to specific user demand. For further information go to www.pickeringtest.com/lxi

Pickering Interfaces has published a book, LXImate, which provides an easy to read overview of the LXI Standard. To order your free copy simply go to www.pickeringtest.com/lximate and request your copy.



Refer to the “**LXI Product Guide**” for descriptions of Pickering Interfaces’ comprehensive range of LXI switching modules, including Modular Chassis capable of supporting Pickering’s range of PXI switching modules.



The Product Guide is available on request or can be downloaded from the Pickering website.

Please refer to the Pickering Interfaces “**Connection Solutions**” catalog for the full list of connector/cabling options, including drawings, photos and specifications. This is available in either print or as a download. Alternatively our web site has dynamically linked connector/cabling options, including pricing, for all Pickering modules.



广州虹科电子科技有限公司 (总部)

广州科学城科学大道99号科汇三街2-701 邮编 510663

电话: 020-3874 3030; 135 3349 1614

传真: 020-3874 3233

sales@hkaco.com | support@hkaco.com

上海 021-6728 2707; 136 7167 1424 | 北京 010-5781 5040; 187 1014 9603

西安 029-8187 3816; 152 9185 3139 | 成都 028-6138 2617; 136 8841 6951

沈阳 024-8376 9335; 157 1053 7541 | 深圳 0755-22677441 | 武汉 027-8193 9100



加关注



hkaco.com