

elproLOG 3.4 New Functions

ELPRO software is being continuously developed and optimized. With one objective: To satisfy our customer's wishes by making the software even easier to use, thus providing an instrument that offers you support at all times in your day-to-day work with important measured data.

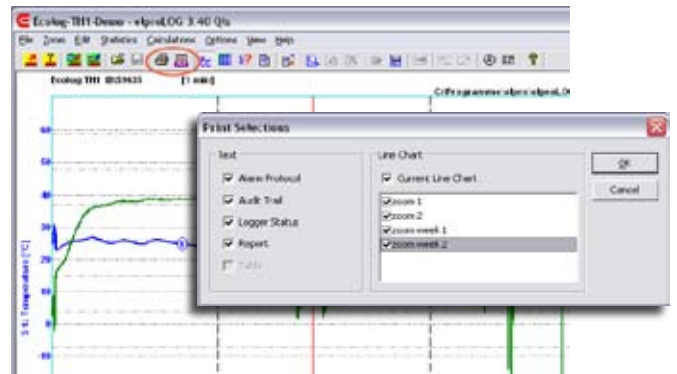
Now available, the elproLOG 3.4 version implements the following new functions:

- Automatic generation of complete reports in PDF format directly from elproLOG
- Ability to append various reports to every data file
- Enhanced zoom functionality and the possibility of saving / loading the user-defined zoom
- Integration of the Envirotainer company's RAPID datalogger system

THE INDIVIDUAL FUNCTIONS IN DETAIL

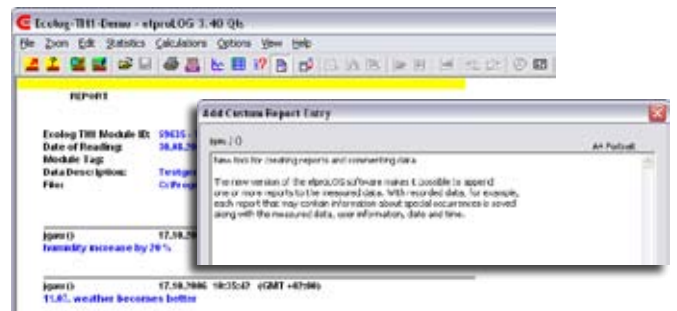
Create PDF reports directly from elproLOG and access multi-page printouts at the push of a button

Facilitating the creation of complete documentation packages, the new software allows you to generate freely configurable multiple-page reports which are made directly available as PDF documents. This way, you can prepare user-defined reports that contain the exact information you require for your work (for example, up-to-date graphs, your own zooms, the logger status and audit trail).



New tool for creating reports and commenting data

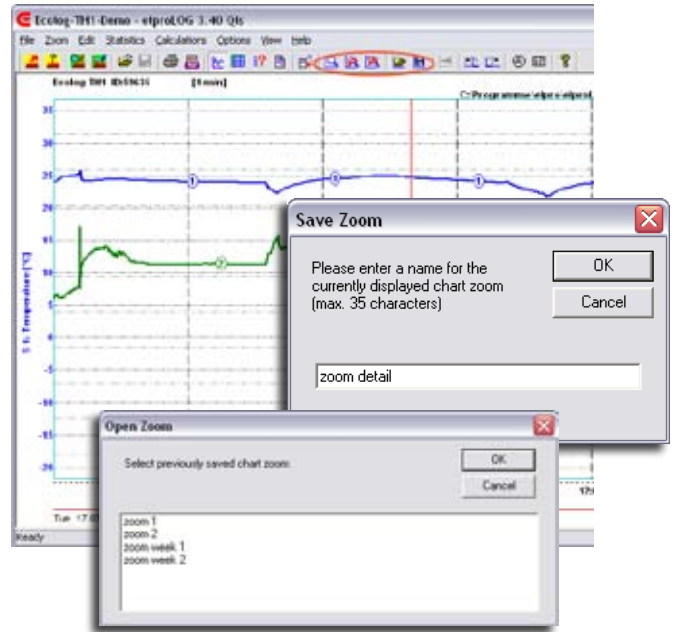
The new version of the elproLOG software makes it possible to append one or more reports to the measured data. With recorded data, for example, each report that may contain information about special occurrences is saved along with the measured data, user information, date and time.



Load and save zooms together with the measured data

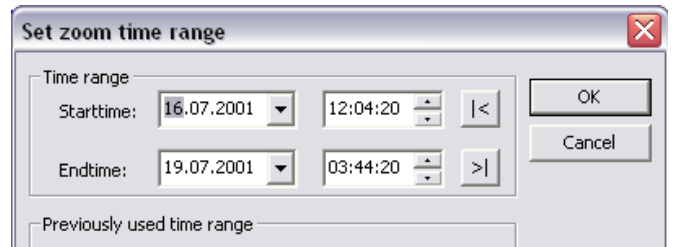
To make analyzing measured data easier, now you can save and, if necessary, load performed zooms and detailed views.

Print information, markings and configurations (e.g. Statistics on/off) are saved along with the zoom settings.



Zoom via date and time entry

In addition to the existing feature for zooming on the time axis, it is now possible to perform a zoom on the basis of a date and time entry.



Integration of the Envirotainer company's RAPID datalogger system

elproLOG 3.4 supports the data format of the new RAPID datalogger system from the Envirotainer company. This allows you to use elproLOG software to analyze data coming from the RAPID system and to save the data as a tamper-proof file.

