

elproLOG EVENT

Operation Manual
Version 1.xx



Table of Contents

1. Introduction to elproLOG EVENT	3
2. Use of elproLOG EVENT	4
2.1 Data Recording.....	4
2.2 Icons	4
2.3 Functions.....	5
2.3.1 Log.....	5
2.3.2 View	5
2.3.3 Tools	5
2.3.4 Help	6
3. Representation	7
3.1 Recorded Information.....	7
3.1.1 Each event is documented with a set of information	7
3.1.2 Tools to list Columns	8
3.1.3 Event Code	9
3.1.4 Incident Number	9
3.1.5 Key - Value - Code.....	9
3.2 Details by Entry.....	10
3.3 Entries by Detail.....	10
4. Printout of Data.....	11
5. Information for Customer Support.....	12

Appendix A: Setup and Select a Database



In the interest of our customers, we reserve the right to make any changes resulting from technical advances. Therefore, schemes, descriptions and extent of delivery are subject to change without any notice!


This manual is valid as from software release 1.0x

1. Introduction to elproLOG EVENT

elproLOG EVENT records all actions, which have been done by one of the elproLOG ANALYZE applications and all events, which arose at run time.

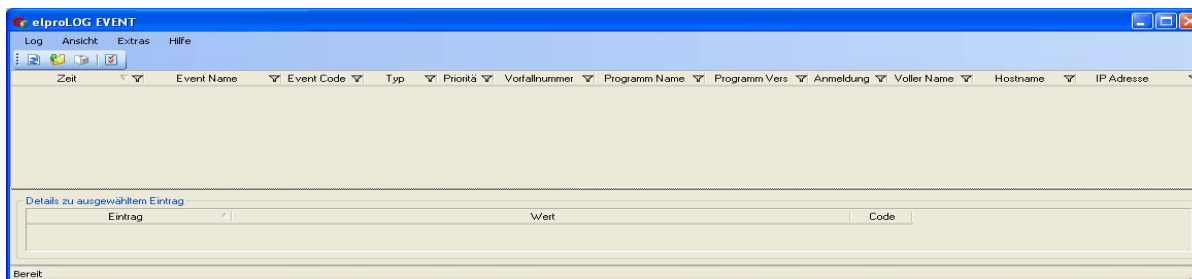
The following functions are part of the software:

- Enables you to set up an event database
- Schedule for automatic data archiving
- Export of the recorded data into a csv-file for further documentations

To control user access, all entries are elproLOG USER supervised by  SU3001E

elproLOG USER 


2. Use of elproLOG EVENT



2.1 Data Recording

As soon as a database has been setup and selected, all actions and occasions are recorded, even elproLOG EVENT is not running! If you start elproLOG EVENT for the first time, you have to select a database (see *Appendix A: Setup and Select a Database*).

2.2 Icons

Move your mouse pointer onto an icon, a short description of the function appears. 



Refreshes the current database, to show the latest actions.

Step back to current databaes if archive has been opened.



Open a log file which has been archived. The information kept in this file could not be modified!



Opens the print preview window to print all selected data (see 4. *Printout of Data*).



Opens the "Preferences" window

- General
Setup application language (currently English and German)
- Database

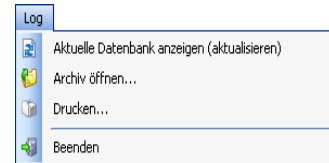
Appendix A: Setup and Select a Database

2.3 Functions

2.3.1 Log

- Show Current (Refresh)
- Open Archive
- Print

For further information see: chapter 2.2 *Icons*

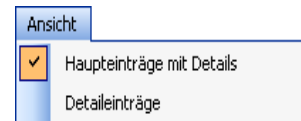


2.3.2 View

Changes the representation mode

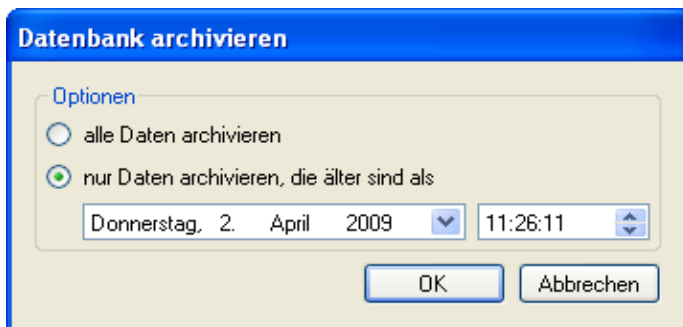
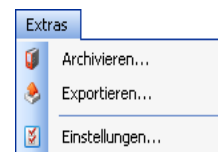
- Main entries with details
All events recorded are represented according to their point of time
- Entries by Detail
All events are represented according to their different, detail information e.g. Logger ID

For further information see: chapter 3. *Representation*



2.3.3 Tools

- Archive
You may choose between 2 different time ranges for data to be archived:
 - Archive all data
 - Archive only data older than Archived data get the file extension .elproEAR.

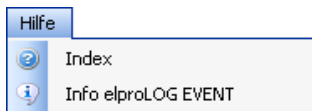


- Export
Lets you export the current database into a CSV-file for further data analysis.
- Settings
Opens the "Preferences" window
 - General
Setup application language (currently English and German)
 - Database

see: *Appendix A: Setup and Select a Database.*

2.3.4 Help

Detailed information about the installed software version



3. Representation

3.1 Recorded Information

3.1.1 Each event is documented with a set of information

- Time
- Event Name / Event Code
Explanation of the event elproLOG EVENT in the selected language, see: *3.1.3 Event Code*
- Type
Group of information to which an event could be assigned.
 - 1 = Information
 - 2 = Warning
 - 3 = Error
 - 4 = Alarm
- Priority
Criteria for events which have similar importance.
 - 3 = high
 - 2 = normal
 - 1 = low
- Incident Number
see: *3.1.4 Incident Number*
- Application Name / Application Version
of the program which has entered the event
- Login / Full Name
- Hostname / IP-Adresse
of the PC which has entered the event
- Key / Value / Code
see: *3.1.5 Key - Value - Code*

3.1.2 Tools to list Columns



Information may be listed in ascending or descending form.

It is possible to set on each column a filter to extract selected data.




- If the filter symbol is empty, no filter has been set.

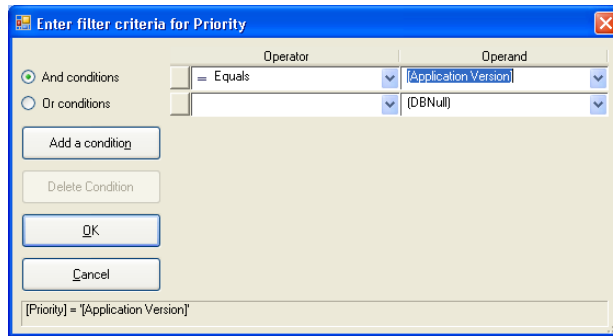


- If the filter symbol is dark blue, a filter has been set.

The following filter criteria are possible:

- (All)
No filter has been set
- (Custom)
Could be used to define custom specific criteria by selecting different operands and their logic function.

Criteria in brackets () are criteria which are not column dependant 



- (Blanks)
- (Non Blanks)
- Column specific information

3.1.3 Event Code

Each incident gets a unique number. These numbers are made of 2 parts: rr sss.

rr		sss	
10	common events		Represents a certain event
11	elproLOG ANALYZE		e.g. 003 for data saved For
12	elproLOG MONITOR		the description of the event,
13	elproLOG CONFIG		see column: Event Name.
15	elproLOG EVENT		

Event codes are language independent, therefore a change of the application language does not change the content of an event.



3.1.4 Incident Number

Each incident gets a unique number. These numbers are made of 2 parts: t uu.

Incidents which belong to the same event are documented with the same incidental number, e.g. application started - application ended or all events which belong to the same alarm....

The command "Autosave" results in just one incident number for each group of dataloggers. For further information see: document SC3001E elproLOG CONFIG.

t		uu	
	Determines the elproLOG application which (A, C, E, M), has caused the incident		Is a consecutive number

*A: elproLOG ANALYZE
C: elproLOG CONFIG
E: elproLOG EVENT
M: elproLOG MONITOR*



3.1.5 Key - Value - Code

Key - Value

These parameters are used for detailed information about an event in plain text. The content of parameter "Value" depends on the information related to the "Key". The language of these information is determined by the selected language of elproLOG EVENT.



If the "Value" of the "Key - Logger ID" is -1, the logger could not be read.

A code is language independent, therefore a change of the application language does not change the content of a code.



Code

A "Code" represents a unique number. These numbers are made of 2 parts: ww zzz.

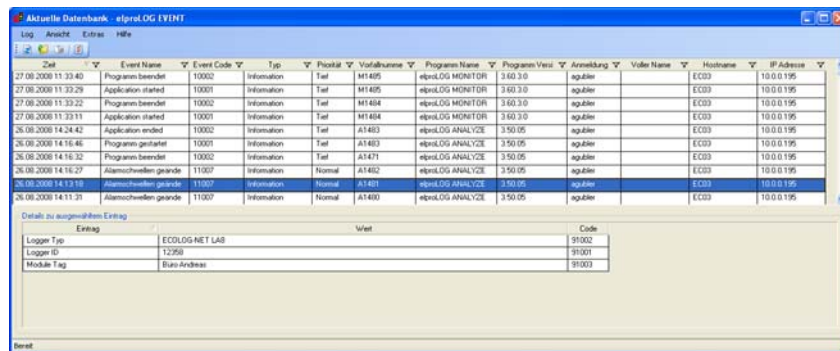
ww

- 90 common events
- 91 elproLOG ANALYZE
- 92 elproLOG MONITOR
- 93 elproLOG CONFIG
- 95 elproLOG EVENT

zzz

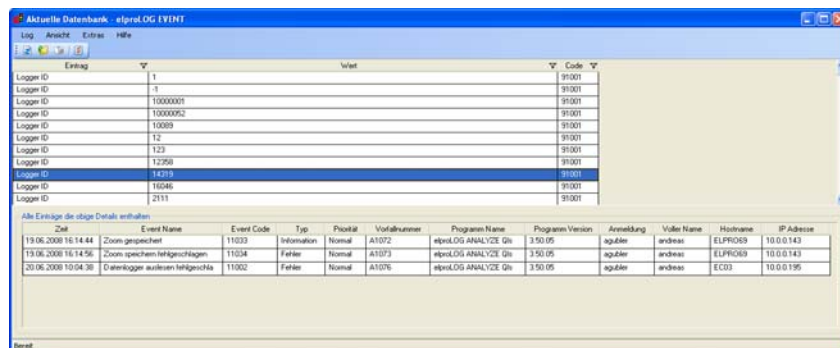
Represents a certain information e.g. 001 for logger ID

3.2 Details by Entry



Events are represented in chronological manner
 For the selected entry, all details which belong to this event will be display.

3.3 Entries by Detail



Alle events which contain the same detail information as the selected one, will be shown.

4. Printout of Data

Application: elproLOG EVENT, Version 0.0.0.5
Date / Time: 21.09.2007 10:30:10
User / Host: agubler @ ELPRO69
Organization: andreas

Time	Event	Code	Type	Priority	Incident #	Application	Version	Login	Hostname	IP Address
20.09.2007 16:45:05	Datenbank archiviert	15002	Information	Normal	E228	elproLOG EVENT	0.0.0.5	agubler	ELPRO69	10.0.0.143
EVENT Datenbank		C:\test\elproLOG								95003
Datenbank archivieren		M:\Entwicklung\Documentation\Anleitungen\SV elproLOG EVENT\Bilder\Event Data Andreas elproEAR								95004
20.09.2007 16:45:53	Application ended	10002	Information	Low	E228	elproLOG EVENT	0.0.0.5	agubler	ELPRO69	10.0.0.143
20.09.2007 16:47:42	Application started	10001	Information	Low	E241	elproLOG EVENT	0.0.0.5	agubler	ELPRO69	10.0.0.143
20.09.2007 16:48:25	Application started	10001	Information	Low	A242	elproLOG ANALYZE Gls	3.50.04	agubler	ELPRO69	10.0.0.143
20.09.2007 16:48:42	Status printed	11023	Information	Low	A243	elproLOG ANALYZE Gls	3.50.04	agubler	ELPRO69	10.0.0.143
Logger Type		Ecolon TH2								91002
Logger ID		9470								91001
Module Tag										91003
File name		009470_20070920-01.mdf								91004
Path		M:\Entwicklung\Documentation\Anleitungen\SV elproLOG EVENT\Bilder\								91005
Printer		Velpro01\HP CLJ 4650\tn PCL 6								91006
20.09.2007 16:51:17	Datalogger readout	11001	Information	Normal	A244	elproLOG ANALYZE Gls	3.50.04	agubler	ELPRO69	10.0.0.143
Logger Type		ECOLOG-NET LA8								91002
Logger ID		12358								91001
Module Tag		Buro Andreas								91003
20.09.2007 16:51:37	File saved	11003	Information	Normal	A245	elproLOG ANALYZE Gls	3.50.04	agubler	ELPRO69	10.0.0.143
Logger Type		ECOLOG-NET LA8								91002
Logger ID		12358								91001
Module Tag		Buro Andreas								91003
File name		012358_Buro Andreas-20070920-01.mdf								91004
Path		M:\Entwicklung\Documentation\Anleitungen\SV elproLOG EVENT\Bilder\								91005
Printer		Velpro01\HP CLJ 4650\tn PCL 6								91006
20.09.2007 16:52:08	Graph printed	11021	Information	Low	A246	elproLOG ANALYZE Gls	3.50.04	agubler	ELPRO69	10.0.0.143
Logger Type		ECOLOG-NET LA8								91002
Logger ID		12358								91001
Module Tag		Buro Andreas								91003
File name		012358_Buro Andreas-20070920-01.mdf								91004
Path		M:\Entwicklung\Documentation\Anleitungen\SV elproLOG EVENT\Bilder\								91005
Printer		Velpro01\HP CLJ 4650\tn PCL 6								91006
20.09.2007 16:52:09	Status printed	11023	Information	Low	A246	elproLOG ANALYZE Gls	3.50.04	agubler	ELPRO69	10.0.0.143
Logger Type		ECOLOG-NET LA8								91002
Logger ID		12358								91001
Module Tag		Buro Andreas								91003
File name		012358_Buro Andreas-20070920-01.mdf								91004
Path		M:\Entwicklung\Documentation\Anleitungen\SV elproLOG EVENT\Bilder\								91005
Printer		Velpro01\HP CLJ 4650\tn PCL 6								91006

Printed on 21.09.2007 by agubler Page 1 / 6

Print preview window



Export the data as pdf-file



Jump one page forward



Starts printing job



Jump to the last page of the print preview



Jump to the 1st page of the print preview



Jump to a certain page of the print preview



Jump one page backwards



Look for certain text within the print preview



Zoom function used for the representation of the print preview

5. Information for Customer Support

If you need further assistance from the ELPRO - Customer support, supply us with the following information please:

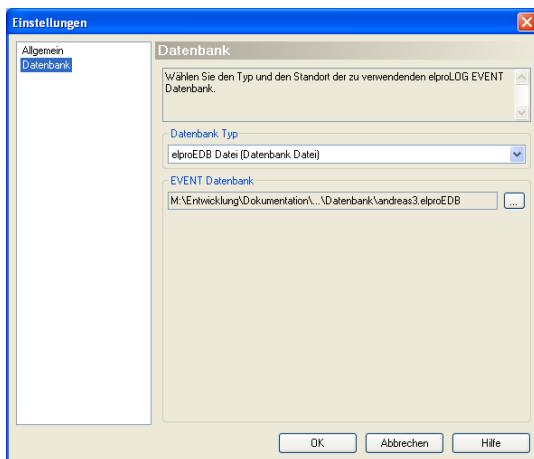
Select in the menu
"Help" the menu item
"Info".



- Version number of the software
The software is delivered on a CD-ROM with the following designation: 1.x.y
The current version number of the software is shown by the ReadMe file.
- version and type of the used operating system.
- Designation of the used elproLOG ANALYZE application and / or datalogger, with which problems arise.
- Do the same problems arise with other elproLOG ANALYZE application and / or datalogger?
- Which were the preceding actions, before problems arose (exact description of your datalogger application: time, temperature, shock).
- Exact definition of the error occurred: copies of the status report, the graphic and the communication history or send us an email containing the read-out data if possible.

Appendix A: Setup and Select a Database

At the first start of the elproLOG EVENT software you should define the name and the location of the database used. This database may be allocated on a local PC or on any server. The "Preferences - Database" window is used to choose the type of database and its location. Currently there is one type of database available: Event database with the extension .elproEDB.



The "Preferences" window is opened by the Settings icon (see: [chapter 2.2 Icons](#)).



General

Setup application language (currently English and German)

Database

- Select a Database
Select the desired database in the "Database Type" menu.
- Setup a database
Path and name of the new database will be assigned in the "EVENT Database" window.



The setup and selection of a database needs local administrator rights!

Index

C

Customer Support 12

D

Database archive 5

Database details 5

Database select 13

Database used 13

Database export 11

E

elproLOG USER 3

F

File extension 5, 13

I

Icons 4, 11

Installation 3, 13

L

Login 3

P

Print preview 11

R

Recording start 4

S

Setup a database 13

Database used 13



(Head Office)

ELPRO-BUCHS AG

Langäulistrasse 62

CH-9470 Buchs SG

Switzerland

email: swiss@elpro.com



**ELPRO MESSTECHNIK
GmbH**

Baumwasenstrasse 20/1

D-73614 Schorndorf

Germany

email: brd@elpro.com



ELPRO Services Inc.

210 Millcreek Road

P.O. Box 727

Marietta, OH 45750

USA

email: usa@elpro.com

ELPRO UK Ltd.

Unit 1, Allen's Yard

Nyton Road, Aldingbourne

Chichester West Sussex PO20

3UA

United Kingdom

email: uk@elpro.com

www.elpro.com