



www.elpro.com

The Datalogger Company

HAMSTER-A and HOTDOG

ELPRO dataloggers for extreme conditions



ELPRO-BUCHS AG

CH-9471 Buchs SG

Switzerland

home: www.elpro.com



广州虹科电子科技有限公司 广州市五山华南理工大学国家科技园 2 号楼 504-505 室 (510640)

电话 : 020-3874 3030; 3874 3032 e-mail: sales@hkaco.com 网站: www.hkaco.com

page 1/4



HOTDOG and its enhanced and compatible companion HAMSTER-A are proven performers under harsh conditions. Watertight and virtually indestructible, HAMSTER-A and HOTDOG are the ideal instruments for documentation for applications in tough environments.

The dataloggers can be submerged to a maximum depth of 10 meters, or can also be buried directly into the soil. One application may be to leave the datalogger during the cleaning process of your cooling chamber using superheated steam.

The measurement values of the internal temperature sensor are stored in the memory and can be analysed and printed out at any time. Using the elproLOG software and PC interface, the data can be transferred easily to any PC using infrared communication.



HAMSTER-A AT1

Part no. 4500

- Large memory for 64'000 data points
- Operating temperature: -40°C... +70°C (data logging)
- Measuring clock: from 1 minute till 3 hours
- Washable, rugged and shock resistant housing
- Requires elproLOG version 3.31 or higher



HOTDOG DT1

Part no. 2201

- Memory for 16'000 data points
- Operating temperature: -40°C... +70°C (data logging)
- Measuring clock: from 2 seconds till 3 hours
- Washable, rugged and shock resistant housing



Part no.: 2302

PC-Interface for HAMSTER-A and HOTDOG datalogger
incl. elproLOG evaluation software and connection cable



Part no.: 2802

Security mounting bracket, for HAMSTER-A and HOTDOG, stainless steel, lockable, 4 snap locks included, with InPosition marking (shows the time, the datalogger was positioned in the bracket)



Part no.: 2816

Simple mounting bracket for HAMSTER-A and HOTDOG, stainless steel



Technical Data HAMSTER-A AT1

Time range: programmable, 1 min - 3 hrs
Accuracy: see diagram
Resolution: 0.1°C (-20°C... +70°C)
Operating Temp.: -40°C... +70°C (data logging)
0°C... +50°C (data transfer to PC)

Housing: ABS, SAN, welded
Weight: 120g
Sealed: IP68, watertight
Battery life: 5 years, depending of use
Battery changeable by ELPRO service only!

Magnetic interference: Module is switched on for data transfer by a magnetic field.

Calibration certificate included

Technical Data HOTDOG DT1

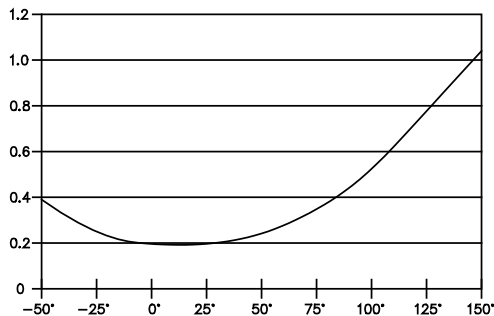
Time range: programmable, 2 s - 3 hrs
Accuracy: see diagram
Resolution: 0.1°C (-20°C... +70°C)
Operating Temp.: -40°C... +70°C (data logging)
0°C... +50°C (data transfer to PC)

Housing: SAN welded
Weight: 170g
Sealed: IP68, watertight
Battery life: 5 years, depending of use
Battery changeable by ELPRO service only!

Magnetic interference: Module is switched on for data transfer by a magnetic field.

Calibration certificate included

Accuracy of NTC temperature sensors



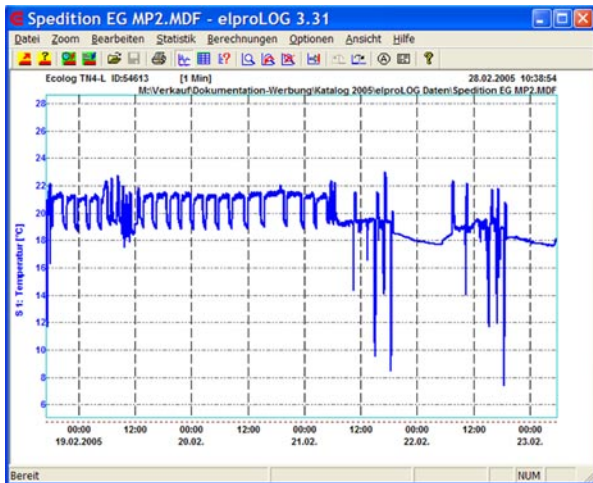
Inscription Area

Please attach no markings or labels outside of the designated inscription area as this may interfere with the infrared data communication.



广州虹科电子科技有限公司 广州市五山华南理工大学国家科技园 2 号楼 504-505 室 (510640)

电话 : 020-3874 3030; 3874 3032 e-mail: sales@hkaco.com 网站: www.hkaco.com



elproLOG evaluation software functions

- Programming for all ELPRO dataloggers
- Data readout from datalogger
- Hardcopies of all screens with print preview
- Clearly laid-out graphs and tables
- Min, max values displayed
- Status printout with information about the datalogger
- Statistical data, histogram representation
- Data and graph export
- E-mail: send data file via e-mail to receiver

elproLOG, the PC software for all ELPRO dataloggers

elproLOG is an easy-to-use software for fast, efficient data evaluation and reporting.

Using elproLOG, the measured values can be transferred easily to the PC and displayed either in graphical or tabular form. The software helps you comply with the provisions of FDA 21 CFR Part 11, GMP, GAMP4 and GLP.

elproLOG software

Part No. 2338-CDV full version

Part No. 2338-CDU update

elproLOG QLS Software for FDA, GLP, GMP

Part No. 2339-BL, basic license

Part No. 2339-FL, follow license

for all Windows PCs:

W98, WNT4, W2000, XP

Automatic installation from the CD



ECOLOG allround datalogger

For temperatures (NTC and PT100) from -200°C .. +550°C, relative humidity 0%..100%, programmable alarm functions, one-year memory capacity (64,000 measured values), large display and multifunctional keypad.



Available as EEx models



The ECOLOG NET logger

LAN/WLAN datalogger for monitoring temperature, humidity and 4..20mA signals. Multi-channel logger system with high data security and alarm features. The ECOLOG-NET is the foundation of the ELPRO Central Monitoring System.



All-purpose datalogger HOTBOX-SE

Ideal for service technicians to use at locations where fast, uncomplicated logging of process data is required. The datalogger measures parameters as temperature, humidity CO2, differential pressure and various signals.



HOTBOX HTH

Humidity and temperature up to 105°C. Stand-alone datalogger for high temperatures, robust aluminum casing, memory capacity for 64,000 measured values.

Contact us for information about dataloggers, sensors, accessories and alarm devices.

Head Office:

ELPRO-BUCHS AG
Langäulistrasse 62
CH-9471 Buchs SG
Switzerland

Tel: +41 81 750 03 11
Fax: +41 81 750 03 17
email: swiss@elpro.com
home: www.elpro.com

ELPRO MESSTECHNIK GmbH
Baumwasenstrasse 20/1
DE-73614 Schorndorf
Germany

Tel: +49 7181 97 94 80
Fax: +49 7181 97 94 85
email: brd@elpro.com
home: www.elpro.com