



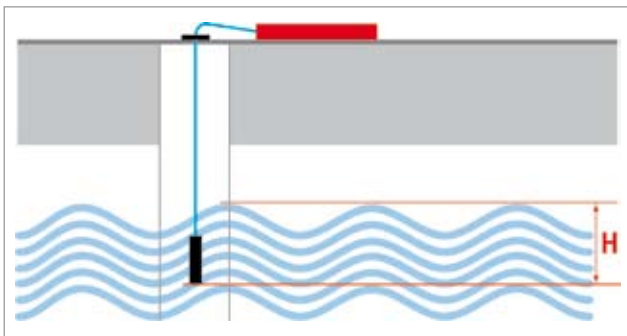
HOTBOX SE Continuous documentation of water level

Datalogger HOTBOX SE and water level transmitter WIKA

Datalogger HOTBOX SE Part No. 2501

Recording of continuously water level and other units

- 4-Channel Logger with 64'000 data points
- Intervals programmable from 1 second to 2 hours
Example: 1 channel: interval 10 minutes, period 440 days
- For use without external power supply
- Battery driven for logger and sensor. Allows recording of up to one year with internal battery in mode «Power Save»
- Up to 4 channels out of 6 inputs:
2 x 4 .. 20 mA, 2 x DC signals, 2 x NTC sensors
- Communication HOTBOX SE to PC:
via RS232 Cable Part No. 2318



Rugged Housing IP66

Part No. 2350-A

Designed for outdoor usage, lockable by a padlock

- Battery supplied
- Weather resistant
- Easy to use



Robust Cable

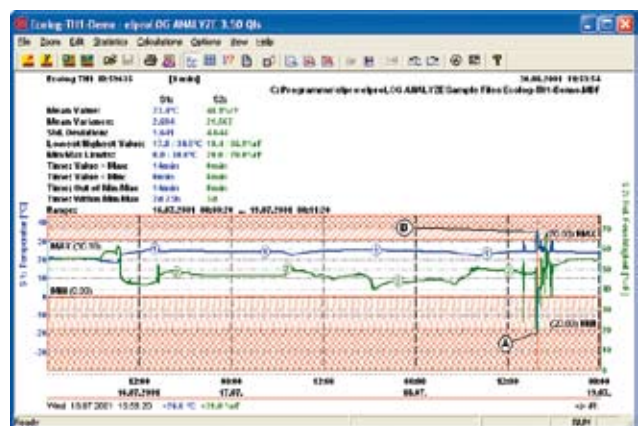
- With the compensation of atmospheric pressure
- Length up to 200 meters

Level Transmitter

Part No. 3263-C 10 meters (optional different length)

- Precise measurement of the water level
- Compensated to temperature and atmospheric pressure
- Signal 4-20 mA, 2-wire
- Supply trough HOTBOX SE

GRAPHICAL EVALUATION



With elproLOG ANALYZE software Part No. 2338-CDV

The units can be prescaled to the required monitoring. The software elproLOG offers all functions to create detailed reports.

广州虹科电子科技有限公司 广州市五山华南理工大学国家科技园 2 号楼 504-505 室 (510640)

电话 : 020-3874 3030; 3874 3032 e-mail: sales@hkaco.com 网站: www.hkaco.com

ELPRO™ Datalogging Company

